

UNCLASSIFIED



ENTERPRISEDB (EDB) POSTGRES (PGS) ADVANCED SERVER SUPPLEMENTAL PROCEDURES

Version 1, Release 6

25 October 2019

Developed by EnterpriseDB and DISA for the DoD

UNCLASSIFIED

Trademark Information

Names, products, and services referenced within this document may be the trade names, trademarks, or service marks of their respective owners. References to commercial vendors and their products or services are provided strictly as a convenience to our users, and do not constitute or imply endorsement by DISA of any non-Federal entity, event, product, service, or enterprise.

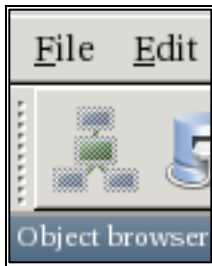
TABLE OF CONTENTS

| | Page |
|---|-------------|
| 1. TECHNOLOGY IMPLEMENTATION CONSIDERATIONS..... | 1 |
| 1.1 PEM Thick Client Alert ShutdownDB Full Audit Log..... | 1 |

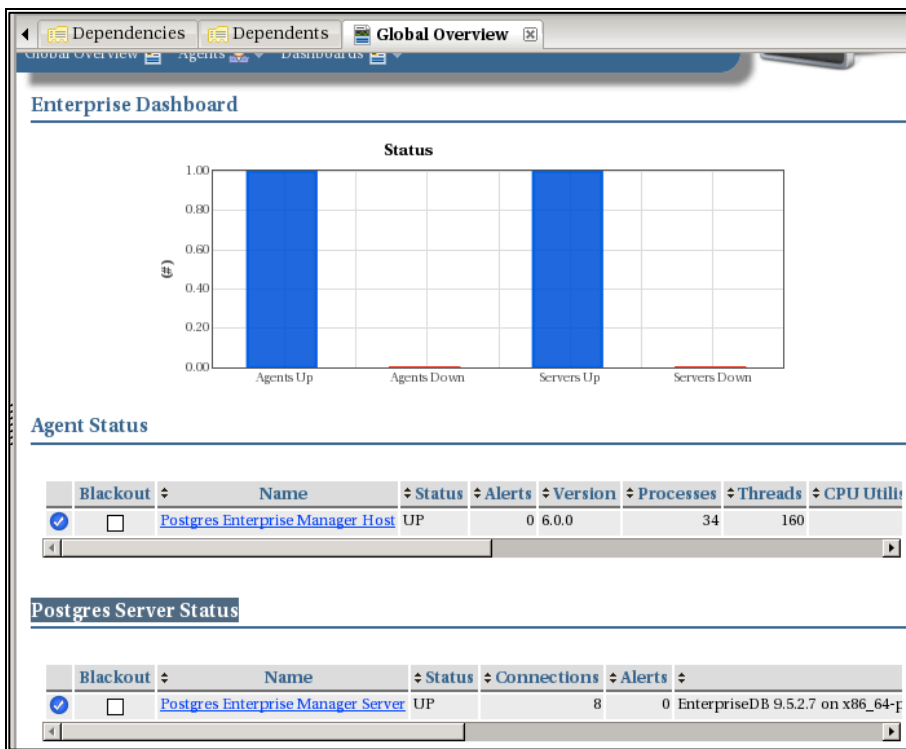
1. TECHNOLOGY IMPLEMENTATION CONSIDERATIONS

1.1 PEM Thick Client Alert ShutdownDB Full Audit Log

- Open PEM Thick Client.
- Verify you are logged on to the PEM server. The PEM logon button should be grayed out and non-clickable:

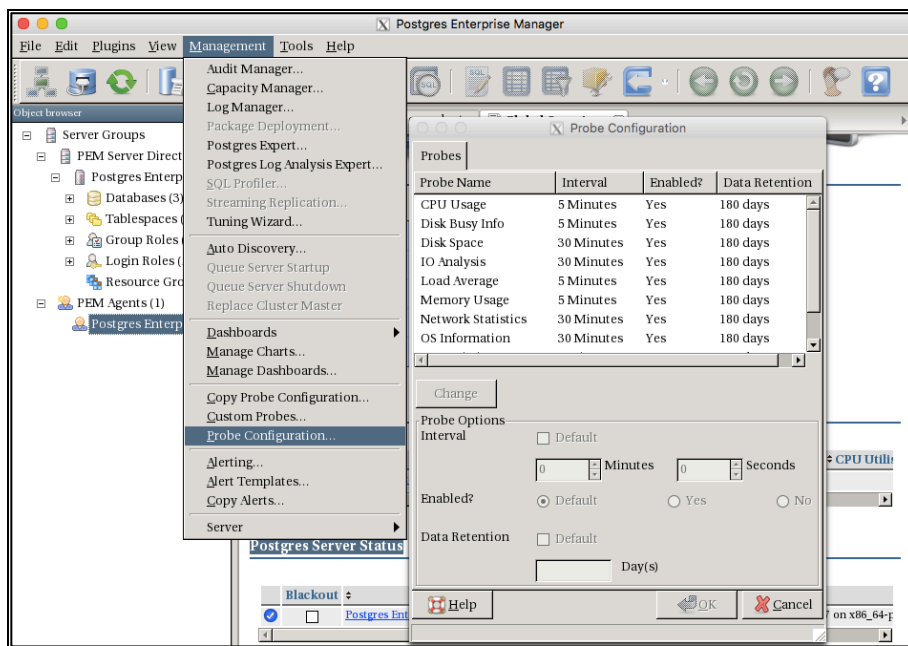


- In the "Global Overview" tab, verify that the DB wanting to alert against is being monitored. Should see it with a status of "UP":



- Click on the agent in the tree on the left to highlight.
- Select Management >> Probe Configuration from the menu.

- This will open the following dialog:



- Select the "Disk Space" row in the Probe Configuration dialog.
- Uncheck "Default" and change the interval to the interval desired (10 seconds was picked for testing).
- Click the "Yes" button by "Enabled".
- Click the "Change" button and notice that it updates the values in the "Disk Space" row above.
- Click "OK" to dismiss the dialog.

PEM has been configured to probe for disk space alerts every 10 seconds; now an alert needs to be created for the probe.

- Select Management >> Alerting.
- Enter "Audit Log Full" in the Definition Name field.
- Select "Disk Consumption Percentage" from the Template dropdown.
- Set Comparison Operator to ">" (greater than).
- Set the Threshold alerts to 95, 96, and 97.
 - All thresholds have general alerts; the 96/97 will not really be used. The DB will shut down when the threshold hits 95%.
 - Additional alerts can be configured to warn against the shut down before this alert actually shuts down the server.
- Set the Mount Point to be the mount point where the audit log is stored.

IMPORTANT NOTE: This must be the actual mount point, not just any directory. For example, if the audit log is just in the data directory and the data directory is in a /var mount

point, then just use "/var" for the mount point, not the entire directory to the audit log. If a separate mount point has been created for the audit log, for example: /edb_audit, use the /edb_audit mount point. All mount points can be seen via the Linux command "df -k".

- Click the "Notification" tab.
- Select the checkbox by "Alert Alerts" for email notification (if desired).
- Select the "Execute Script" checkbox.
- Enter this for the script: "systemctl stop ppas-9.5.service"

Alerting

Definition | **Notification**

Alert List

- Alert Name
- Load Average per CPU Core (5 min)
- Memory used percentage
- Swap consumption percentage
- Most used disk percentage
- Package version mismatch
- Agent Down

Name: Audit Log Full

Template: Disk consumption percentage

Description: Percentage of disk consumed.

Required probe(s): disk_space

Alert Options

Frequency: ☒ Default 1 Minutes

Enabled?: ☒ Yes ☐ No

History Retention: ☒ Default 30 Day(s)

Comparison Operator: <

Threshold Values: Low 95 Medium 96 High 97

Parameter Options

| | Name | Value |
|---|-------------|----------------------------------|
| 1 | agent | Postgres Enterprise Manager Host |
| 2 | mount point | /var/lib/ppas/9.5/data/edb_audit |

Add/Change Remove Help OK Cancel

Please verify threshold values and operator

The image shows a window titled "Alerting" with two tabs: "Definition" and "Notification". The "Definition" tab is active. On the left, there is an "Alert List" with the following items: Load Average per CPU Core (5 min), Memory used percentage, Swap consumption percentage, Most used disk percentage, Package version mismatch, and Agent Down. Below the list are buttons for "Add/Change", "Remove", and "Help". The main area of the dialog is divided into several sections: "Email Notification" with checkboxes for "All Alerts", "Low Alerts", "Med Alerts", and "High Alerts", each with a dropdown menu set to "<Default>"; "Trap Notification" with a "Send Trap" checkbox and radio buttons for "v1" and "v2", and checkboxes for "Low Alert", "Med Alert", and "High Alert"; "Nagios Notification" with a checkbox for "Submit passive service check result to Nagios"; and "Script Execution" with a checked "Execute Script" checkbox, an unchecked "Execute on alert cleared" checkbox, a label "Execute script on:" with radio buttons for "PEM Server" and "Monitored Server" (selected), and a text area containing the code "systemctl stop ppas-9.5.service". At the bottom right are "OK" and "Cancel" buttons. A status bar at the bottom says "Please verify threshold values and operator".

- Click the "Add/Change" button on the left of the dialog and notice that the "Alert Log Full" alert name now shows up in the list on the left.
- Click the "OK" button to dismiss the dialog.
- Once the alert has fired, notice will appear in the alerts dashboard that the DB has been shut down:

